



# SICORA

*Design/Build*

FULL-SERVICE  
HOME  
REMODELING

WWW.SICORA.COM

952-929-0098

## Case Study: Master Bath Remodel Bloomington beautiful bathroom

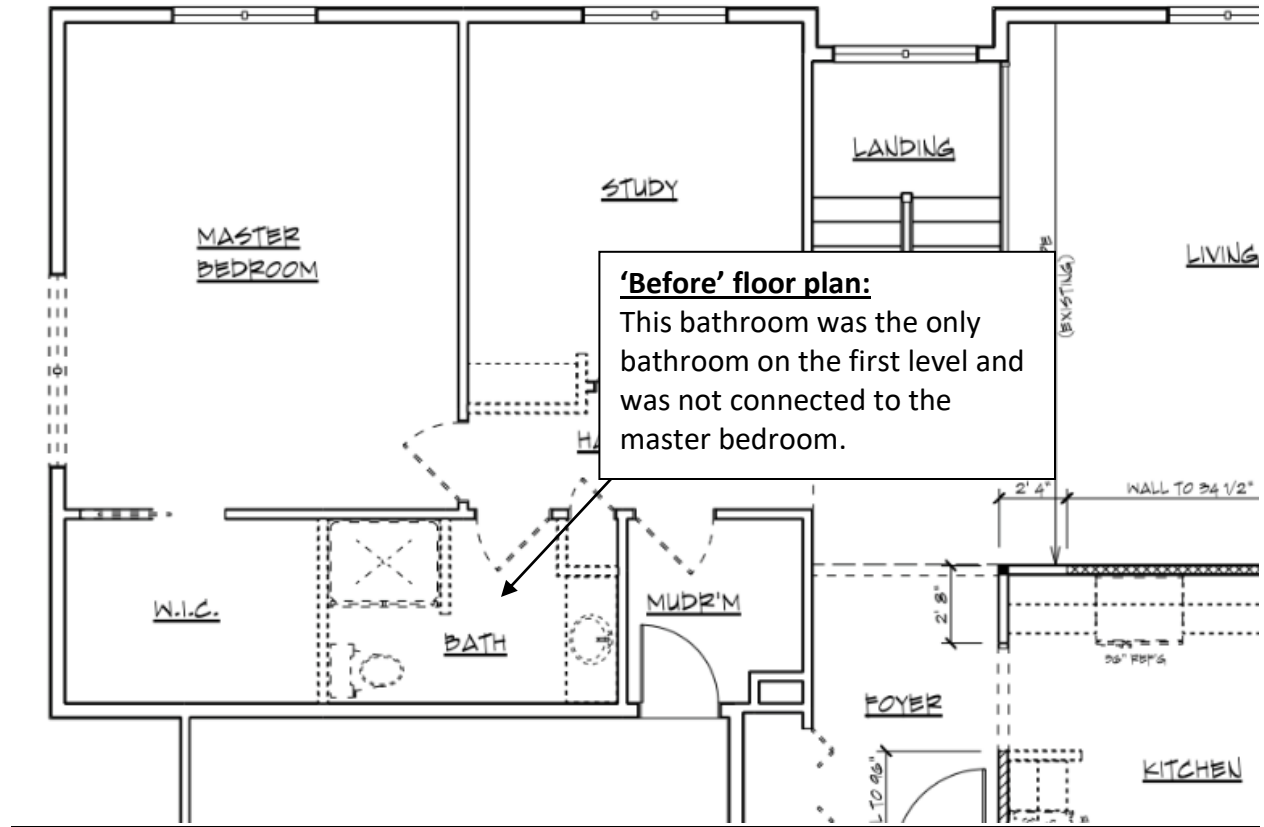
This project took a dated, small shared bathroom, connected it to the master bedroom, expanded it to allow for a bigger countertop with custom cabinets for optimized storage. The steam shower features three different kinds of tile for a unique, high-end design. This case study will walk you through the development and finishes for this Master Bathroom. We hope you find the information helpful as you plan your own project!

### Needs and wants discussed with the client:

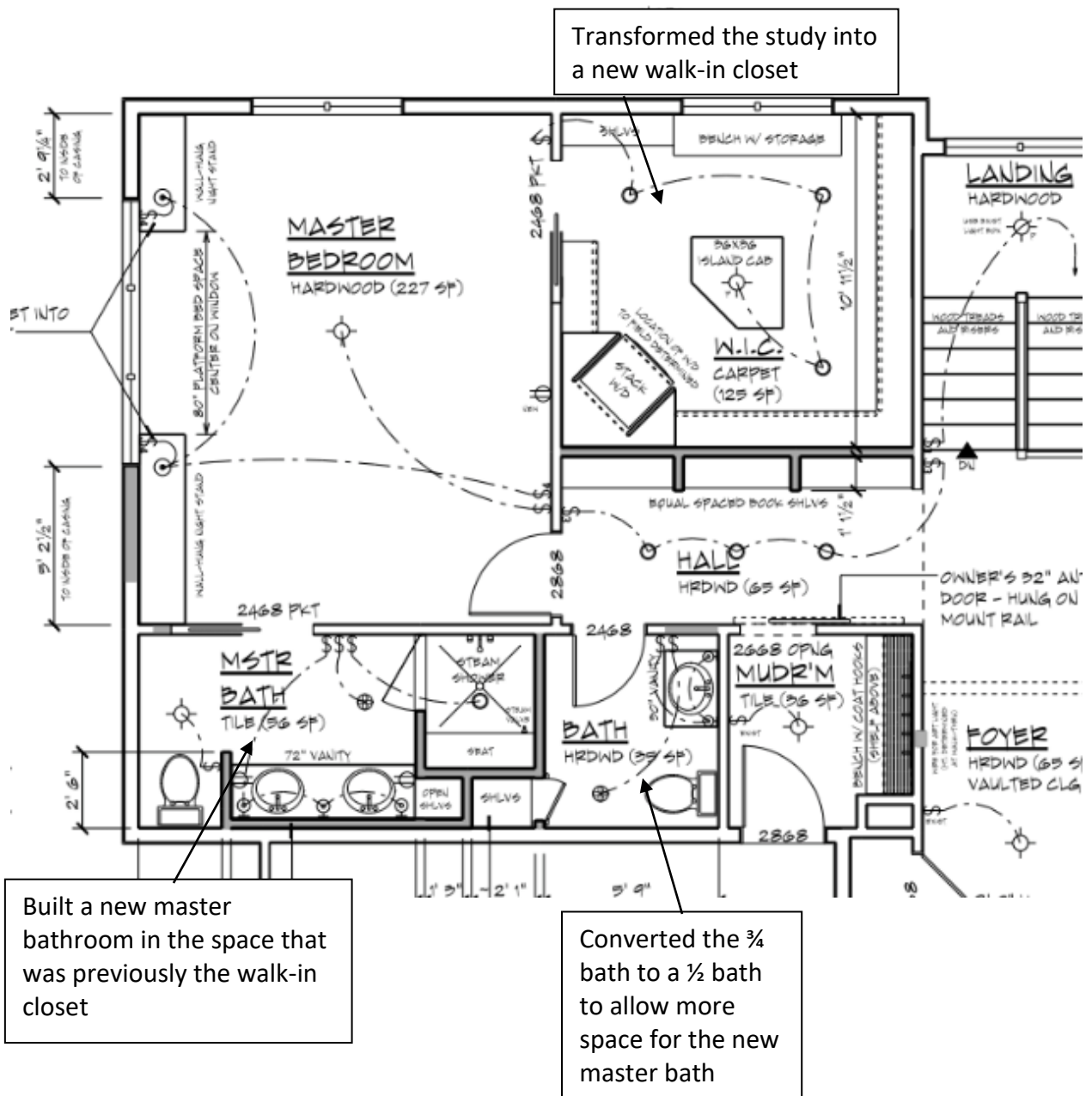
1. Larger Master Bathroom
2. Custom cabinets
3. Cabinet storage solutions
4. Luxury steam shower with a seat in the shower

### General items included with each Sicora project:

- Permits, construction plans, inspections, dumpster, lead testing, and necessary site prep all included
- Portable on-site toilet provided
- Design assistance for finish and material selections and project management included
- Structural engineering was included with this project
- Online client web portal set up specifically for the management of your project
- Sicora will provide a full warranty for your project (12-month cosmetic warranty, 2-year mechanical warranty, and a 10-year structural warranty)
- Sicora owns its own custom cabinet shop, which allows us to create custom, unique solutions for your space
- Appliances are paid for and supplied by the owner. The cost of appliances is NOT included in any projects described. Sicora will provide the installation of your appliances



BEFORE  
Picture



**Master Bathroom Specifications:**

- Tile floor: 12"x 24" stone look porcelain tiles
- Bathroom hardware
  - Toilet paper holder: Delta Trinsic Wall Mount in brilliance stainless
  - Towel bar: Delta Trinsic 18" towel bar in stainless
  - Towel bar: Delta Trinsic 24" towel bar in stainless
  - Hand towel ring: Delta Trinsic rectangular open towel ring in stainless
  - Robe hooks: Delta Trinsic 1 robe hook
- Wall paint: Sherwin Williams in Silverpoint

### **Vanity Specifications:**

- Custom cabinets crafted at Sicora's own cabinet shop with a custom storage insert
  - Species: Cherry
  - Finish: Sherwin Williams stain in Mission Oak (discontinued)
- Cabinet pulls: Berenson 3" Cabinet Finger Pull in brushed nickel
- Countertops: Quartz Cambria countertop



### **Shower Specifications:**

- Shower floor: 2' hex natural stone
- Shower walls: Grey matte subway tiles, 12"x 24" stone look porcelain tiles, with insert of 2" hex natural stone
- Built-in tiled seat in shower

### **OPTIONS:**

1. In-floor heating
2. Additional custom cabinets in bathroom

**PRODUCT SPECIFICATIONS (included in the project described above):**

- LIGHT FIXTURES
  - Wall-mounted sconces (3): allowance of \$150 ea
  
- PLUMBING FIXTURES
  - Faucets (2): Delta Trinsic single hole in stainless
  - Sinks (2): Kohler Verticyl oval undermount bathroom sink in white
  - Toilet: Kohler Santa Rosa 1 piece with elongated bowl in white
  - Shower heads:
    - Delta Trinsic showerhead in stainless
    - Delta Grail single function handheld showerhead in stainless
  - Steam shower: Steammist steam shower with Koehler electronic control (budget about \$4,500 for these units; exact cost depends on the size of the unit, which is based on the size of the shower)
  
- FLOORING/WALL COVERINGS
  - TILE
    - Scope: Backsplash of the bath vanity, shower (including the ceiling of shower being tiled due to the steamer unit install; finished with a slight pitch to avoid cold water drips on you while showering), and bathroom floor
    - Ceramic/Porcelain tile is always assumed for installation, though this project also included natural stone accents
  
- CABINETS
  - General:
    - Drawers: Slow-close hardware, cherry, dove-tailed construction
    - Doors: Full overlay with face-frame construction
    - Interior: White melamine
    - Insert: Maple with a clear coat
  
- CABINET HARDWARE
  - \$18/each pull or knob
  
- COUNTER TOPS
  - Tier 1 Quartz



- MIRRORS/ SHOWER DOORS
  - 3/8" thick, frameless glass door.

### **Project Cost Worksheet:**

---

#1. Master Bathroom

**\$ 68,550.00**

Current pricing as of 11/12/20

### **Financing Options:**

If you are evaluating ways to finance your project, we encourage you to reach out to Gail Vinje of Supreme Lending, for a conversation. Gail manages about 90% of the construction loans that Sicora works with. She can be reached at [gail.vinje@supremelending.com](mailto:gail.vinje@supremelending.com) or at 612.670.4230.

### **Complimentary Consultation:**

If you would like to discuss your project with Sicora, you can schedule a consultation in one of the following ways:

1. Phone Consultation at 952.929.0098, OR
2. Email us at: [rsonnek@sicora.com](mailto:rsonnek@sicora.com), OR
3. Schedule a complimentary, in-home consultation online at [www.sicora.com](http://www.sicora.com). Click on 'schedule now' and select 'in-home appointment' and you'll see all of the available meeting days and times.

We look forward to helping you craft a beautiful solution for your home!

